



Basildon, Billericay & Wickford | CVS



Support

Develop

Collaborate

Influence



Volunteer Sector News – Autumn 2018

CONTENTS

Welcome to the latest BBWCVS newsletter. You can download a copy of this edition and previous editions online in our member area. Please visit www.bbwcvs.org.uk. We hope that you make time to read this edition (and pass it on to other staff/volunteers) although we know that pressure on time is one of the biggest issues you face. That is why we are continually looking at ways on how we can improve this newsletter. So if you have any suggestions or ideas please let us know.

Contents

CHIEF OFFICER'S UPDATE	3
CVS NEWS	5
FUNDING.....	6
VACANCIES.....	12
NATIONAL NEWS	13
LOCAL NEWS AND EVENTS.....	15
VCS CALENDAR & EVENTS 2018	16

Chris Evans	Chief Officer	01268 294781
Catherine Sackey	Funding & Development Services Manager	01268 294439
Jaclyn Bennett	Finance Officer	01268 294124
Simon Johnson	Heart of Pitsea Co-ordinator	07572 001671
Gill Buttwell	Heart of Pitsea Administration	01268 294011
Marilena Luxmoore	Volunteer Co-ordinator	01268 294420
Mandy Workman	Administration/Timebank Project Lead	01268 294125

THIS IS YOUR NEWSLETTER! Do you have anything that you want to say or promote? If YES, then send your articles to the CVS Office (admin@bbwcvs.org.uk) and we'll include them in the next edition. (We reserve the right to refuse any item).

Whilst every effort is made to ensure the accuracy of the information in this newsletter, BBWCVS cannot accept liability for any errors within. Publications, events and services mentioned in this newsletter are not necessarily endorsed by BBWCVS. Please note that BBWCVS is not responsible for the content of external websites, opinions expressed on those sites do not necessarily represent those of BBWCVS

Welcome to the Autumn Edition of our Newsletter

It's a few weeks since I last updated you on the latest news from BBWCVS – it's been anything but a quiet time. While others were (hopefully) enjoying the school holidays and recharging their batteries ready for the autumn, we have been renewing our service level agreements, and developing delivery plans.

Perhaps the biggest news for the sector recently was the publication of the [civil society strategy](#). We cover this more extensively elsewhere in this newsletter. The strategy has something for everyone and makes some key commitments on behalf of the government. Covering a range of themes the strategy explores funding, [public services](#), [campaigning](#), [regulation](#), impact, digital service and volunteering. It is worth a peak.

CVS Update

Here at the CVS we have also seen some staff changes. Donna, our finance officer, left after a number of years' service. Donna played key roles in the development of our web site and the delivery of some key projects. We wish her every success in her new role.

Her replacement Jaclyn Bennett has started in post. She is finding her feet so be nice to her! She is a welcome new addition to the team.

Social Prescribing Project

July also saw the ending of our involvement in the delivery of the Social Prescribing Project. The new model Care Navigation includes a single point of entry and extended delivery area. We wish the delivery partners the Red Cross, Community Agents and PROVIDE all the best.

During the course of the project we supported over 500 patients. The evaluation report undertaken by PACEC reported that between a quarter and a third of users reported reduced use of primary, secondary and social care. It showed:

Reduced use of primary care – 59% of survey respondents reported reduced number of hours spent with their GP and 34% of survey respondents reported reduced number of prescriptions received

Reduced use of secondary care – 31% respondents of survey reported a reduction in outpatient appointments attended. This compares favourably with the findings from the Rotherham Social Prescribing pilot which reported a reduction of 21% in the number of outpatient appointments

Reduced use of social care - 25% of survey respondents reported reduced hours of support from a social worker

CHIEF OFFICER'S UPDATE

We can be proud of our efforts and would like to thank all our VCS partners for making a difference to patients in Brentwood and Basildon.

Our Service Level Agreement Priorities and focus

As a local authority Essex County Council recognises that it cannot service commission its way out of population public health and social care challenges, nor is a service solution always the best solution. Instead by working differently and adopting new approaches to better engage the population of Essex in their health and social care, the community can co-design and collaborate to:

Considerably extend our collective reach so that many more people are supported than through traditional service delivery approaches

Extend the time and capacity available to support residents by utilising and mobilising assets to develop sustainable and resilient local communities to better respond to public health and social care challenges.

The result is a more focused approach to the delivery of adult health and social care and the role the CVS's can play. This means we will be having more discussion with you about the role we all can play to reduce depression, minimising falls, enhancing access to weight management support, increasing the provision of mental health first aid training and thinking creatively about how to reduce social isolation in our communities.



BBWCVS has signed up to this site, which is free for charities to join.

The Warp It vision is to be a network where buying new is the last resort and nothing is wasted. A network where reusable items are redistributed for their 2nd and 3rd useful lives. When the items fail they are diverted into repair and reintroduced later.

Reduce waste and carbon emissions. Make it easy for staff to reduce unnecessary purchasing. Make it easy for organisations to divert surplus resources to charity and SMEs so they can further their aims.

If you are looking for office equipment or having a clear out and don't want to send good useable items to the dump, someone else maybe able to make use of them. This is the site that can be used to find a new owner.

Here is the link to the site: <https://www.warp-it.co.uk/> **Tell us what you think?**

CVS Forum

You are warmly invited to the next CVS Networking Forum to be held on Tuesday 25th September at 9.30am to 1.00pm.

We have speakers from Employ-Ability, South Essex Active Travel (SEAT) programme and Basildon Credit Union Ltd.

Employ-Ability, a national charity and Centre for Excellence which helps people with poor mental health to get into and keep work has been funded by Essex Community Foundation's Thriving Third Sector Fund, to pilot a Workplace Support programme.

Kevin Garrod will present details on support for voluntary/community sector leaders, managers and trustees to enable them think about and develop good workplace practice for mental health. Organisations will learn how to access Employ-Ability's Individual Placement Support Service for staff unable to sustain their employment or where employer's need to help secure new work for staff as part of their duty of care.

Iain Banks will provide an overview of the SEAT programme and how jobseekers, young people, newly recruited employees, students, lower socio-economic communities and volunteers can access tailored advice, support and promotion packages to enhance their access to the 12,000 new jobs and 10,500 education and training opportunities in South Essex over the next three years.

Leah Douglas will present an overview of the Basildon Credit Union and services available for people who live and work Basildon.

There will be time for networking and information sharing on projects and new developments across the community and voluntary sector. Please register at:

<https://www.eventbrite.co.uk/e/basildon-cvs-networking-forum-tickets-49599319901>

*There is only limited disabled parking available at the George Hurd Centre. For alternative parking near the Centre, please see link below.

<http://www.basildon.gov.uk/article/5872/Town-Centre-Car-Parks>

Please contact Catherine Sackey (catherine@bbwcv.org.uk) or call 01268 294439) for more information.

FUNDING

We are able to give funding advice and support on funding opportunities and approaches to fundraising.

This includes:

- **FREE** access to NCVO's Funding Central identifying possible sources of funding.
- Developing and discussing funding strategies.
- Commenting on and helping with draft applications.
- Identifying and monitoring outcomes in a straightforward way.
- Exploring the best way of improving your organisation's financial sustainability.
- Identifying other useful free funding search engines to assist you in your exploration for funding.

We offer this support either at face-to-face meetings, by phone and/or by email. We have good relationships with local funders and we can also help you review applications that have been unsuccessful or help clarify any issues or problems that crop up.

For further assistance please contact Catherine Sackey on 01268 294439 or email catherine@bbwcvcs.org.uk

Gannett Foundation - Community Action Grants

Grants are available for UK registered charities in areas in which Newsquest publications are circulated for a range of community projects that benefit the local community

Maximum Value: £ 10,000

Minimum Value: £ 5,000

Application Deadline: 08 October 2018

Typically grants are made for substantial projects which require and merit awards of between £5,000 and £10,000. Small amounts will be considered but the Foundation actively encourages imaginative and ambitious projects on a bigger scale.

The Gannett Foundation is the charitable arm of Gannett Co, Inc., owner of Newsquest Media Group, which publishes regional and local newspapers, websites and magazines across the UK. The Gannett Foundation provides funding to support local projects and organisations in areas where Newsquest operates. The funds are managed by the Quartet Community Foundation. In the last 10 years alone, the Gannett Foundation has made grants in the UK alone totalling nearly £4 million.

Details can be found: <http://www.newsshopper.co.uk/contactus/gannettfoundation//>

Trusthouse Charitable Foundation

Grants are available to smaller charitable and not-for-profit organisations in the UK to fund community support, arts, education and heritage projects in areas of extreme urban deprivation or remote, socio-economically deprived rural areas.

The Foundation offers the following support:

- Grants for revenue costs (including salaries, overheads and project costs):
- Small grants of £2,000 to £7,500 for one year.
- Major grants of £7,500 to £20,000 per year for one to three years.

Grants for capital costs (one-off costs for building projects, including buying a building, repairing it or fitting it out):

- Small grants of £2,000 to £7,500.
- Major grants of £7,500 to £60,000.

For all capital grants, the total project cost must be less than £2 million.

Recipients of single year grants can re-apply for funding in two further successive calendar years. Multi-year grant recipients will not be able to make any further applications until two years after the completion of the final year of the grant.

Contact the Trusthouse Charitable Foundation for further information.

<http://trusthousecharitablefoundation.org.uk/grants/>



High Sheriffs' Fund

The High Sheriffs' Fund was established in Essex in 1993 and is managed by ECF.

Local charities and voluntary organisations are encouraged to apply for grants of up to £5,000. Funding will be awarded to projects that help to make communities safer and better places in which to live.

Organisations from Essex, Southend and Thurrock are all eligible to apply. Projects which have received grants previously include a handyman service for housebound and vulnerable people living in Epping Forest District, construction skills training in Chelmsford for disadvantaged teenagers and a mentoring programme in Clacton for boys who have an absent father.

To apply for a grant and for more information, [click here](#). The deadline date for applications is 1st December 2018 and decisions will be made in February.



Tesco Bags of Help Community Funding Scheme



Bags of Help is Tesco's exciting community grant scheme where the money raised from the sale of carrier bags is being used to fund thousands of local projects in communities right across the UK.

Three community projects in each local area will be voted on by customers in Tesco stores throughout the UK, with projects changing every other month. Following the vote, the project that received the most votes in its area will receive a grant of up to £4,000, second place receiving up to £2,000, and third place up to £1,000.

Administration of the local funding is being managed by the community charity with a green heart, [Groundwork](#) which specialises in transforming communities and the local environment for the better. Applications are assessed by Groundwork to ensure they are eligible. In areas where application numbers are high, Tesco colleagues will shortlist the projects to determine which go forward to the customer vote.

Bags of Help is now permanently open for applications, but the sooner you apply, the sooner you could be awarded funding!

Who can apply?

A wide range of voluntary or community organisations including registered charities, schools, Parish/Town Councils and local authorities, health bodies (e.g. Clinical Commissioning Groups (CCGs), NHS Hospital Trust, Foundation Trust), social housing providers, conservation organisations, sports clubs and constituted community groups. This list is not exhaustive and there will be many other types of organisations that will be funded.

What kind of projects will Bags of Help fund?

The programme's aims and objectives are to fund projects which will benefit the local community. As well as continuing to fund projects in outdoor spaces such as allotments and community gardens, grants will now be available to fund the purchase of items such as sports kits, equipment, tools or specialised medical equipment. Projects where activities take place indoors will also be eligible. Funding is also available for improvements to community buildings, for example a scout or guide hut, church or village hall or sports changing rooms. Groups looking to hold seasonal events and activities such as a Christmas lights switch on can also apply. These are just some examples of projects that are now eligible as the green light will be given to many other schemes that meet the programme's aims and objectives, to fund projects which will benefit the local community. Check the website for more ideas about the kind of projects Bags of Help could fund and also to find out what projects are ineligible.

How to Apply

For more information and to apply visit the dedicated website: www.groundwork.org.uk/tesco When you make an application, please download and read through the [Application Guidance Notes](#). The guidance notes will give you tips to help you submit a good quality application and you can refer to each section for advice as you complete the online application process.

To apply you need to submit an application online via the website. On the website, go to the **community group tab**, and then click **apply for a bags of help grant**. Follow **steps 1 and 2** which

FUNDING

will involve completing an initial quick eligibility quiz. Once you have done this you can start your application and you will be emailed a link which you can use to log back into your account. The application can be saved as you go along and does not have to be completed all in one go.

Further advice and support

We do hope you will consider applying, and that Bags of Help will be able to support a whole range of community projects across Essex. If you need any further advice or support, including talking through some project ideas or finding out how to make a project eligible, contact your local Bags of Help enabler. In Essex this is: Victoria Rudd, Development and Community Project Officer, Groundwork Essex.

Phone: 07736 132873 **E-mail:** victoria.rudd@groundwork.org.uk

Or Kat Davies, Community Project Officer. **Phone:** 07736 134119 **E-mail:** kat.davies@groundwork.org.uk



Women's Mental Health Peer Support Programme

Funded by the [Department for Digital, Culture, Media and Sport](#) and administered by [Mind](#), the programme aims to increase the availability of sustainable, mental-health peer support.

Who can apply: Registered charities, Community Interest Companies (CIC), Charitable Incorporated Organisations (CIO) and Companies Limited by Guarantee.

Eligibility is specific to each funding strand, read the [guidance](#) for further information.
Two funding strands are available:

1. Women's Peer Support Hub Grants:

- Up to £50,000 is available to deliver five Women's Peer Support Hubs, alongside direct or indirect peer support delivery.
- Up to £25,000 is available to solely deliver the Women's Peer Support Hub capacity building element.

2. Peer Support Delivery Grants:

- Thirty large grants of £5,000-£25,000 are available for peer-support initiatives.
- Fifty small grants of £5,000-£10,000 are available for peer-support initiatives.

Deadline: 15 October 2018

For more information: <https://bit.ly/2PuI0w0>

Veolia Environmental Trust Accepting Stage One Applications for Spring 2019 Projects



The Veolia Environmental Trust provides grant funding to community and environmental projects in England through the Landfill Communities Fund. Grants of up to £75,000 are available to cover 80% of a project's total cost. Match funding of at least 20% is required.

Groups requesting grants of £40,000 or more are required to provide a Third Party Contribution. The funding is to be used for capital improvement projects taking place at a single site.

The Trust will consider applications from constituted not-for-profit organisations with a bank account that have a project that addresses at least one of the following categories:

- Community buildings and rooms, including community centres, village halls, community spaces within religious buildings, and Scout or Girlguiding buildings.
- Outdoor Spaces, including public parks, nature reserves, community gardens, footpaths, bridleways and cycle-paths.
- Play and recreation, including play areas, skate parks, Multi Use Games Areas, sports grounds, pavilions and changing rooms.

The Trust is oversubscribed with applications for funding and therefore this is a very competitive process. The chances of success are improved however, if the application clearly explains why the general public need the project to go ahead, includes letters of support from a wide range of potential project beneficiaries, and the project clearly meets the funding criteria.

Deadline for Stage One applications: 29 November 2018 (12 noon) for projects taking place between 26 March 2019 and 18 June 2019.

For more information: <https://www.veoliatrust.org/>

FUNDING



Power to Change - Community Business Fund open

The Community Business Fund aims to help locally based and community-led businesses to increase their social impact and make them more viable in the long-term.

Power to Change will support the development of sustainable community-led enterprises across England to help more people respond to local need and opportunity, and change the places in which they live for the better.

Existing Community Businesses that are incorporated and based in England can apply. A variety of legal structures are eligible to apply but organisations must be incorporated and have a charitable purpose at the heart of the project that funding is being sought for.

Funding is provided by the BIG Lottery Fund and administered by the Power to Change Trust.

As Power to Change is a charitable fund, it can only fund community business projects which further a charitable purpose and meet a charitable community need.

A community business is often set up to tackle a local issue that the community faces together. There are many types of community business but the four key features that they must have are:

- **Locally rooted** - they are rooted in a particular geographical place and respond to its needs, for example high levels of urban deprivation or rural isolation.
- **Accountable to local community** - they are accountable to local people. This can be demonstrated in many ways but the organisation must have evidence of regular community influence on the business.
- **Trading for benefit of local community** - they are businesses and their income comes from activities like renting out space in their buildings, trading as cafés or selling the produce they grow.
- **Broad community impact** - they benefit the community as a whole and can clearly evidence the positive social impact on the broader community.

Organisations must have at least one year of accounts; this could be management accounts or annual accounts. Organisations that have not been operating long enough to have one year of financial accounts are not eligible, unless it is a subsidiary of an established organisation that can provide at least a year of accounts.

Deadline for applications: 12noon, Tuesday 9th October 2018

For more information: <https://www.powertochange.org.uk/get-support/programmes/community-business-fund/>

VACANCIES



Miles for refugees

Make your miles count this September



Are you an experienced event organiser?

We are looking for a

Open Garden Coordinator

Do you love flowers and plants? Enjoy meeting new people? Then we need your help at our Open Gardens events.

Contact: 01245 291014

BritishRedCross



Are you proud of your garden?

Share your passion for gardening and help people in crisis.

Will you open your GARDEN?

Some fundraisers invite their friends and family over for an afternoon of fun. Others open their gardens to the public and host a tea party.

Contact: 01245 291014

BritishRedCross

A New Generation of Female Leaders is Standing up for the Charity Sector

This is an extract from an article that appeared in Third Sector Magazine. We have been given permission to publish this article. For the full article please follow this link:

<https://www.thirdsector.co.uk/strong-intelligent-strategic/article/1488105>



Jane Ide



In June 2017, Ide replaced Neil Cleeveley as chief executive of Navca. She worked in the private sector, the NHS and the civil service before joining Navca in 2016.

Ide on the sector leading the way: "As charities, we should be modelling a different way of working. Potentially other sectors can be learning from us"

"In my previous job, in the sports sector, I would tend to be one of two women in the room, and that lack of balance feels wrong, uncomfortable," she says.

Oakley also feels that there has been a move away from "the heroic model of leadership" and the long-hours culture.

Caron Bradshaw has led the Charity Finance Group since 2010, having previously worked for the accountancy body the ICAEW. As the mother of four children, she says she has been very "lucky" because her husband does most of the childcare: "He hasn't been in paid work in 19 years."

Her own experience has made her consider the CFG's flexible working arrangements. "The first person to take up flexible hours was a man," she says.

"So I think it's less about us being flexible towards mothers and more about acknowledging that people of all types, with children and those who are childless, all have different responsibilities.

"We have to look beyond this rhetoric of 'women need to have childcare'."

Vicky Browning, chief executive of the charity leaders body Acevo, has held senior leadership roles in the charity sector since 2010. She says she's been impressed by the new level of collaboration, but believes there's a danger that female leaders can be viewed as simply "nice and supportive".

"Actually, what I've seen are really strong, strategic, intelligent women who know what they need to do and do it really well," she says.

They're doing it in a way that "isn't doing each other down" but is still effective, she adds. Women make up 63 per cent of the charity workforce, according to the National Council for Voluntary Organisations' UK Civil Society Almanac 2018.

Alliance Calls for Future Dormant Assets to Fund 'Left Behind' Communities

A new Community Wealth Fund could support the communities who need it the most.

An alliance of voluntary sector organisations supported by major funders is proposing a new multi-billion-pound Community Wealth Fund to support the communities who need it the most.

The alliance says that a Community Wealth Fund would meet key ambitions set out in the government's recent Civil Society Strategy and provide the long-term strategic investment needed to promote strong relationships and social action across England, supporting a richer and more resilient civil society in areas which have struggled in the face of economic and social challenges.

Strong resourceful communities: The case for a Community Wealth Fund asks the government to go further than the £35m identified in the Strategy by committing the next wave of unclaimed financial assets to a new £1-2b endowment to support 'left behind' communities.

The Community Wealth Fund identifies unclaimed assets from bonds, shares, insurance policies and pension funds, supplemented by other dormant assets including those trapped in charitable trusts whose purposes are no longer feasible. An endowment of this kind, which the Alliance believes could also attract corporate support, might over time value in the region of £5b.

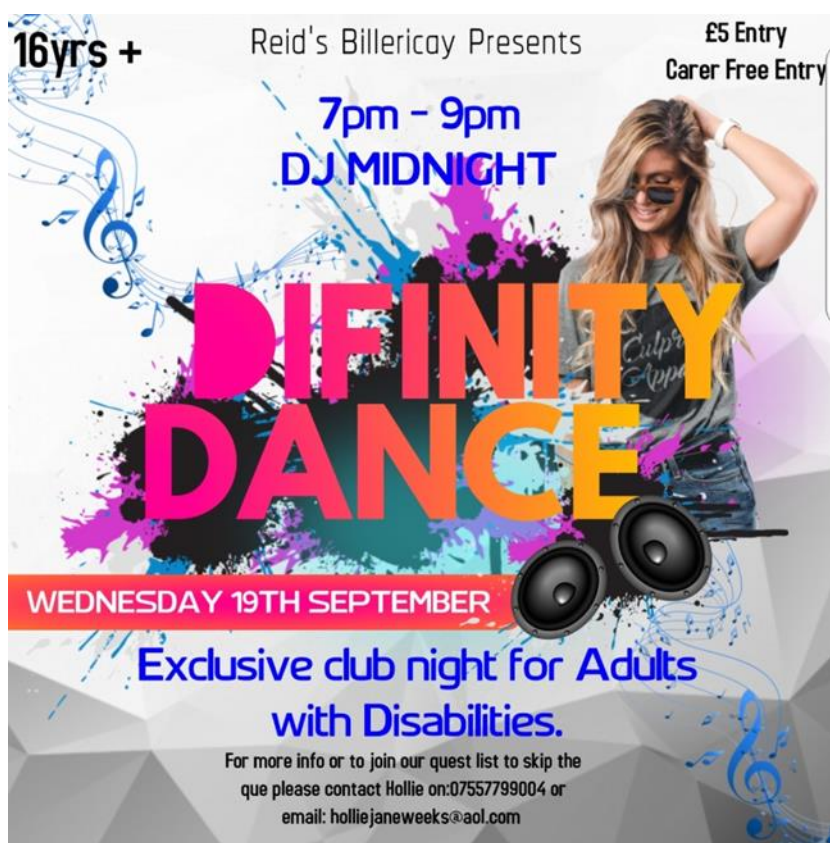
A consensus is already emerging around how these dormant or 'trapped' funds could be used most effectively for the benefit of society.

The Proposal for a Community Wealth Fund aims to meet the ambitions of the Civil Society Strategy by:

- creating substantial place-based investment programmes
- introducing a new model of investment bringing together finance from a range of sources to raise social and economic outcomes
- developing new approaches in communities that have not benefited from growth and where there is a lack of capacity and capability to access investment.

For more information: <https://bit.ly/2wtwijyz>

LOCAL NEWS AND EVENTS



There is an error on the flyer, this event is for 14yrs+ age group.

For more information contact Hollie:
holliejaneweeks@aol.com
or call 07557799004



Help Essex County Council improve their web services

Essex County Council are improving their web services—this includes things like online guidance and support, online forms and online payment options.

They need people like you to help them.

There are lots of ways to get involved, from quick online tests like this one <https://ows.io/tj/4fsjm885>, to testing new online tools in person as they are developed. Those involved in testing have really enjoyed this role.

You can register your interest in the different opportunities we have available here:

<http://surveys.essexinsight.org.uk/TakeSurvey.aspx?SurveyID=96MMml40>.

If you have any questions, contact Narelle Ong, Essex County Council Service Design team, narelle.ong@essex.gov.uk

VCS CALENDAR & EVENTS 2018

Date	Event	Contact
Fri 14 Sept Starts at 6:45pm	Heart of Pitsea Family Quiz Night Basildon Upper Academy, Wickford Academy, SS13 3HL	admin@heartofpitsea.co.uk
Sat 22 Sept – Sun 23 Sept 10am – 5pm	The National Country Show Live Hylands Park, London Road, Chelmsford, Essex CM2 8WQ	https://www.nationalcountryshow.co.uk/#
Tues 25 Sept 9.30am - 12.30pm	2018 Network Forums The George Hurd Centre, Audley Way, Basildon. SS14 2FL	01268 294439 catherine@bbwcvcs.org.uk
Sat 29 Sept 10am - 2pm	Dementia Awareness Drop-in	01268 524973 amanda@stlukeshospice.co.uk
Tue 9 Oct 10am – 3pm	George Hurd Centre Open Day The George Hurd Centre, Audley Way, Basildon. SS14 2FL	
Wed 10 Oct 10am – 2pm	Mental Health Awareness Day Basildon Library	
Wed 10 Oct 10am - 3:30pm	Red Cross Gift Fair Parklands Quendon Hall Quendon, Nr Saffron Walden, CB11 3XN	01245 291014
Tue 30 Oct 10am - 12:30pm	Basildon Community Tree Launch The George Hurd Centre, Audley Way, Basildon. SS14 2FL	01268 294125 admin@bbwcvcs.org.uk

To book a place or for further information please use the identified contact.
This calendar will be regularly updated throughout the year, so if you have events you wish to add please let us know.

Contact Us For more information on the articles in this bulletin or to advertise an event, training or information about your organisation in our next bulletin, please call 01268 294125 or email admin@bbwcvcs.org.uk

