



PACEC

Public and Corporate
Economic Consultants

Evaluation of Social Prescribing Models across Essex

Krishna Ramkhelawon

Agenda

- Terms of Reference
- Methodology
- Timescales
- Role of Evaluators
- Evaluation Team

Terms of Reference

Primary outcomes:

- Primary care use by prescription recipients, and savings associated with any reduction
- Reduction in secondary care use and associated savings
- Reduction in social care use and associated savings

Secondary outcomes:

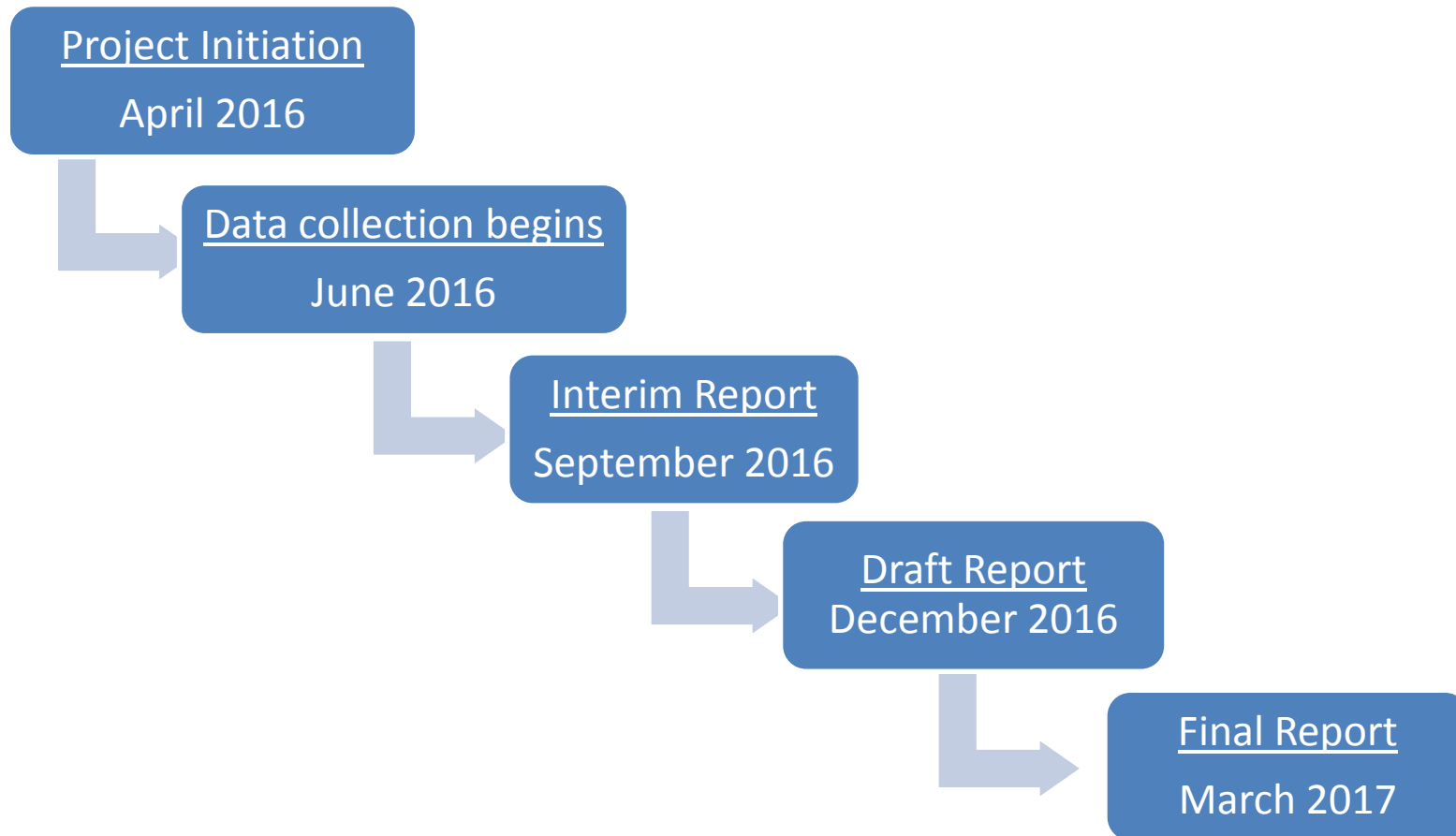
- Impact on mental wellbeing, social isolation and general health
- Cost estimates to the NHS and Essex County Council of providing the services that people are directed to via social prescriptions
- Whole-system impacts, including impact on SP providers, community resilience and capacity, inter-organisational relationships and joint working.

Wider Impacts: Impacts on families and carers

Methodology

Stage	Key activities
1: Project Initiation	- Meeting the evaluation steering group to agree approach, timescales & communication
2: Desk Based Research	<ul style="list-style-type: none"> - Policy & Literature Review - Review of the different models used in each area - Review of Health and Social Care data at CCG level - Review of Southend data - Work with providers/ referrers to establish control groups.
3: Develop Baselines & Fieldwork (service users and control groups)	<ul style="list-style-type: none"> - Establish representative evaluation participant groups in each area - Survey users and control group to gather baseline data - Follow-up with evaluation participants quarterly via telephone interviews
4: Consultations & Case Studies	<ul style="list-style-type: none"> - Consultations with key stakeholders (Council staff, CCGs, GPs etc) - Detailed case studies (5) with service users
5: Analysis	<ul style="list-style-type: none"> - Analysis of qualitative and quantitative data (health impacts, social impacts, use of health and social care services) - Financial analysis - using New Economy Manchester Model.
6: Workshop & Reporting	<ul style="list-style-type: none"> - Workshop with evaluation steering group to discuss emerging findings - Draft and final reports (and presentation of final report).

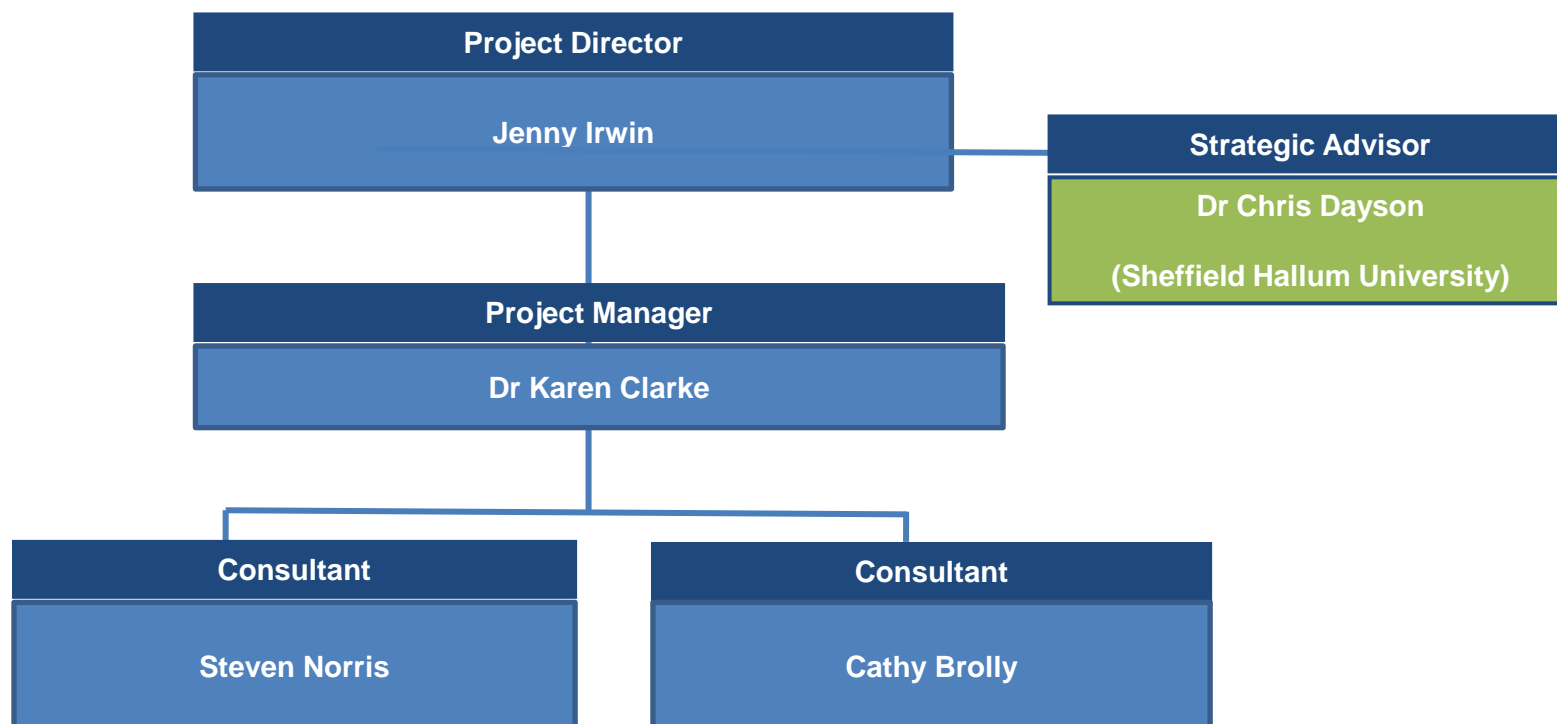
Timescales – Key Dates



Role of Evaluators

- Analyse health and Social care data (HSCIC) and patient level data where available
- Design and deliver health and social care surveys
- Analysis of Programme Management Information
- Consultations with key stakeholders
- Analysis of financial data (using the New Economy Manchester Model)
- Reporting
- Presentation

Evaluation Team



How you can help?

Encourage service users to participate in the evaluation; it is not possible to fully understand the impact of social prescribing without their input.

Evaluation Team Contacts

- Jenny Irwin – jenny.irwin@pacec.co.uk
- Karen Clarke – Karen.Clarke@pacec.co.uk